

1. PREFACE

Thank you for your patience with my broken English , again.
This APP has been upgraded, I revised this manual .

The new features are

- support for triplets and tie notation
- New original note symbol font “ Jzonz.ttf” .
- Coped with “ in key” E ♭ and B ♭ .
- Additional menu “exercise mode”
- Fixed some bugs

I built “Bamboo Score” to practice fingering for bamboo sax , like a TAB score for guitar.
So , this software is not “score writer” . It’s a “fingering chart writer”.
“Bamboo Score” can’t write a chord, daruseno, and more....., but it can write fingering chart for bamboo sax , transpose the tones easily and more.....

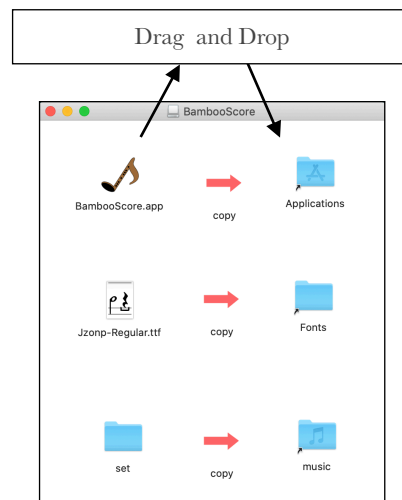
I wish you enjoy playing bamboo sax with “Bamboo Score”

2. Operating environment

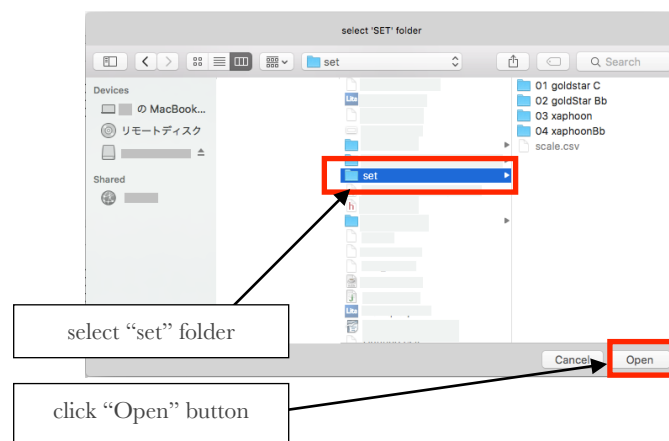
I built “Bamboo Score” on
MacBook Pro 13” Catalina

3. Install

- Copy “Jzonz.ttf” to “/Library/Fonts/“ .
- Copy “Bamboo Score” to “Applications” folder
- Copy “set” folder to “~/music” folder .



For your first time to launch “Bamboo Score”,
the folder selection panel is displayed.
So please specify the "set" folder you just copied ,
and quit the application once. then Please start it up.

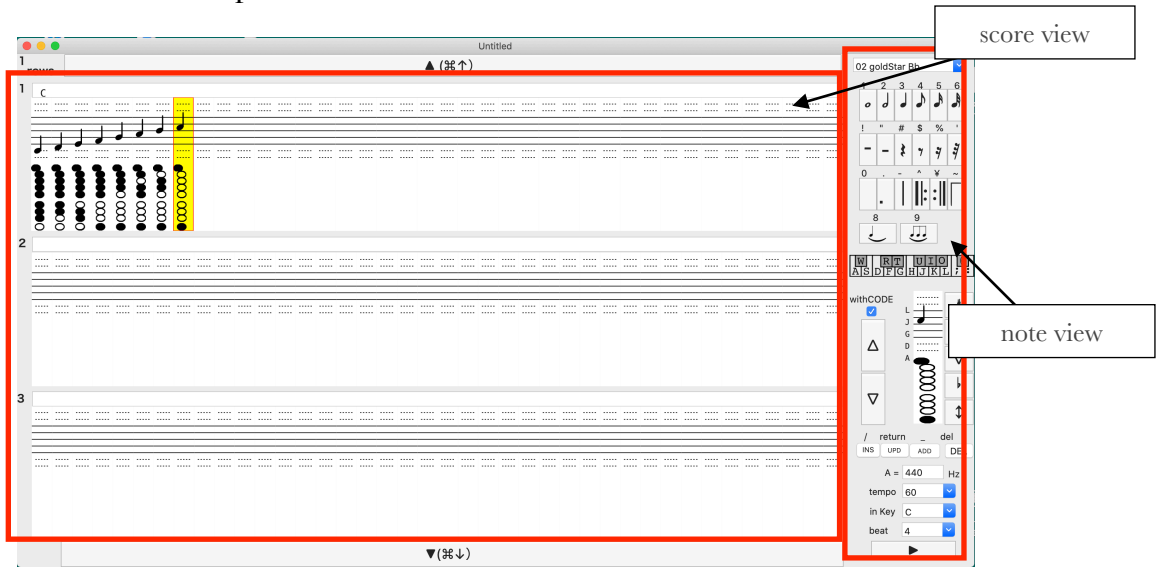


Contents

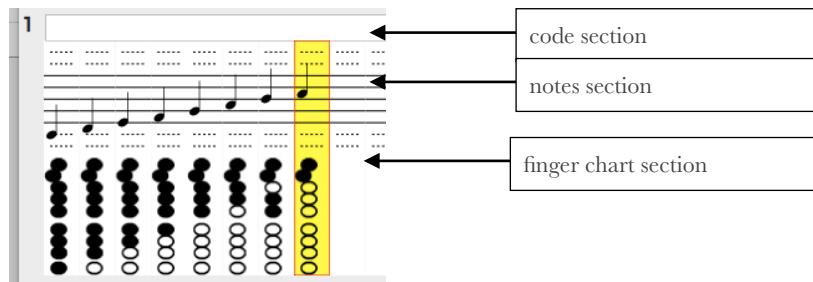
0	main window	3
1	1 enter some notes ~ major scale	5
	1 – 1 enter the notes with mouse	6
	1 – 2 enter the note with keyboard	8
	1 – 3 enter the notes with virtual piano	10
2	play the score	11
3	save / print the data	11
4	enter the notes any more	12
	4 – 1 enter the various notes	12
	4 – 2 repeat mark	13
	4 – 3 replace the tone	14
	4 – 4 enter the code name	15
	4 – 5 transpose the key of melody	15
	4 – 6 copy and paste	16
	4 – 7 Triplets , Tie notation	17
5	more Play the note	19
	5 – 1 set the tempo	19
	5 – 2 set the 'in Key'	19
	5 – 3 set the frequency	19
	5 – 4 set the count of snappings	20
	5 – 5 exercise mode	20
6	additional tips	21

0 main window

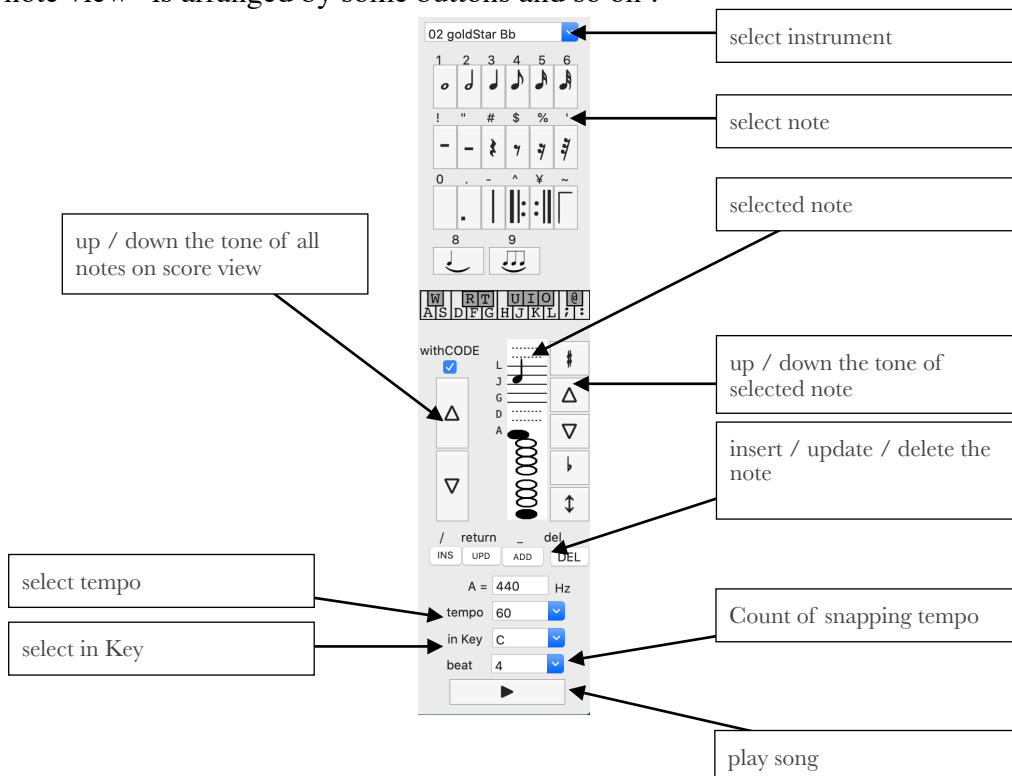
Main window is made up of “score view” and “note view” .



“score view” is made up of “code section” , “notes section” and “finger chart section”

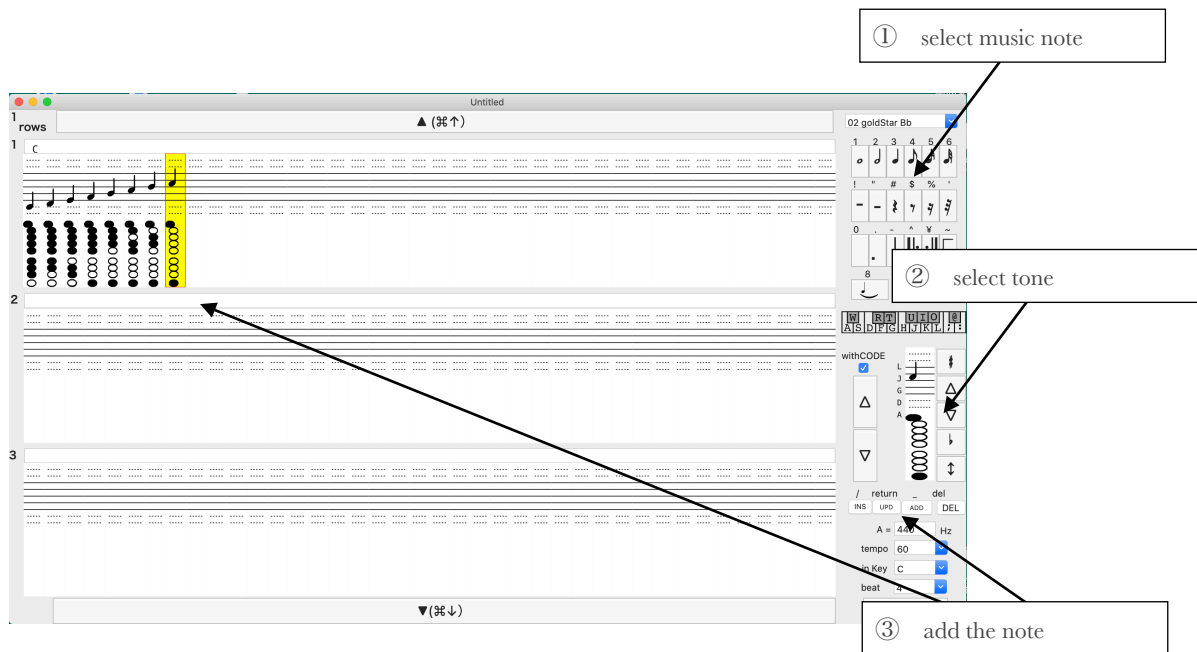


“note view” is arranged by some buttons and so on .



How to write the score with Bamboo Score is repeat to

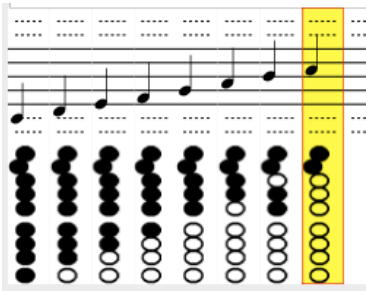
- ① select music note
- ② select tone
- ③ add note to score view



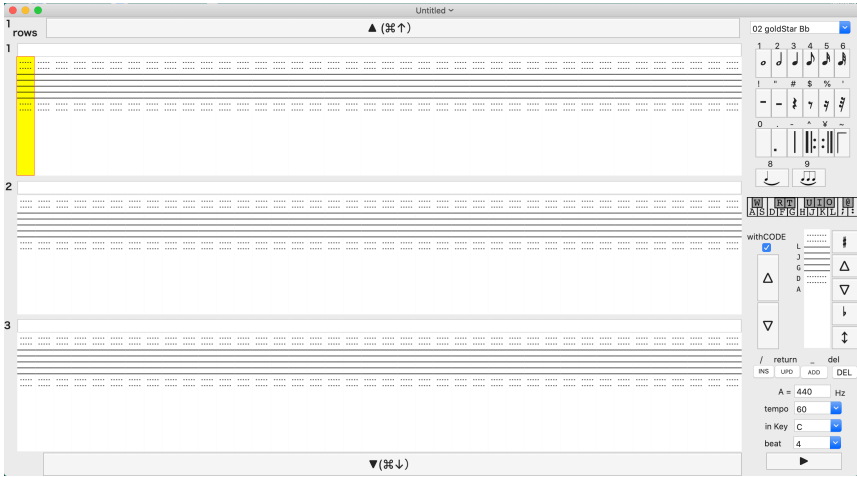
Anyway , without more ado , let's write a music sheet.

1 enter some notes ~ major scale

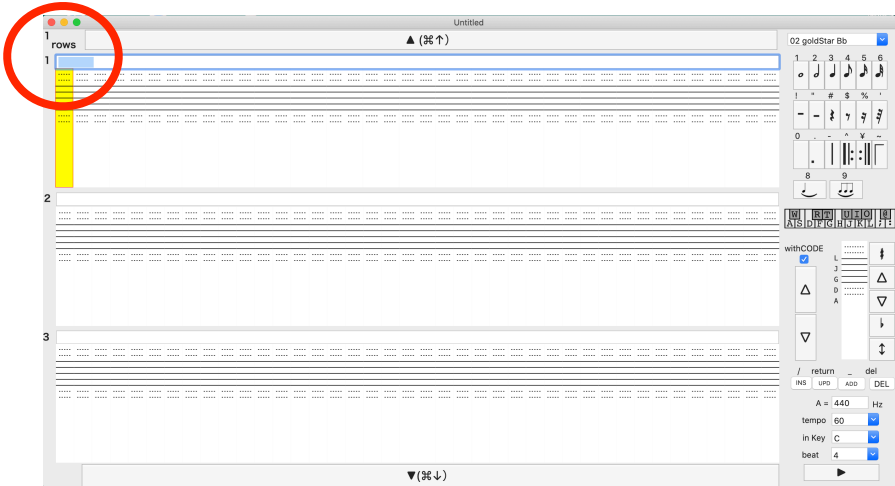
You will write this score.



At first , start up “Bamboo Score” .
You can see like the lower chart.



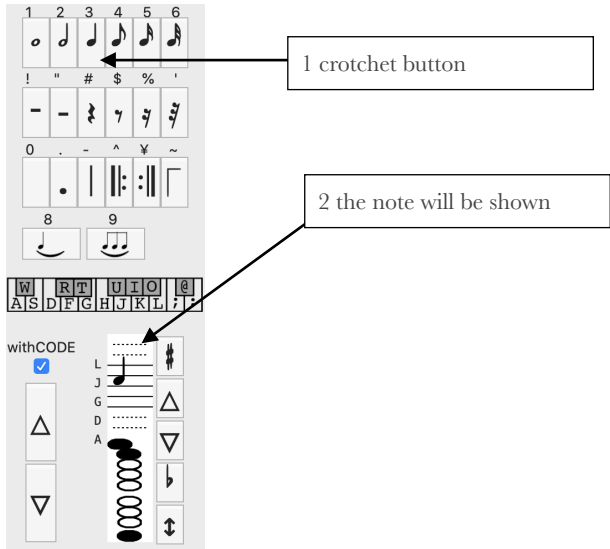
If “code section” is focused , type escape key few times .



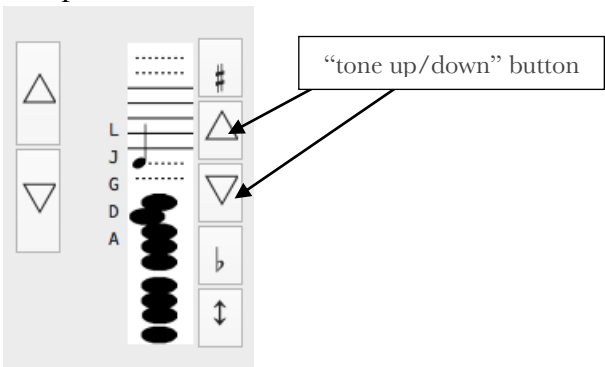
You can choose mouse or keyboard or virtual piano to enter the music notes with .
At first , I describe how to enter the music notes with the mouse.

1 – 1 enter the notes with mouse

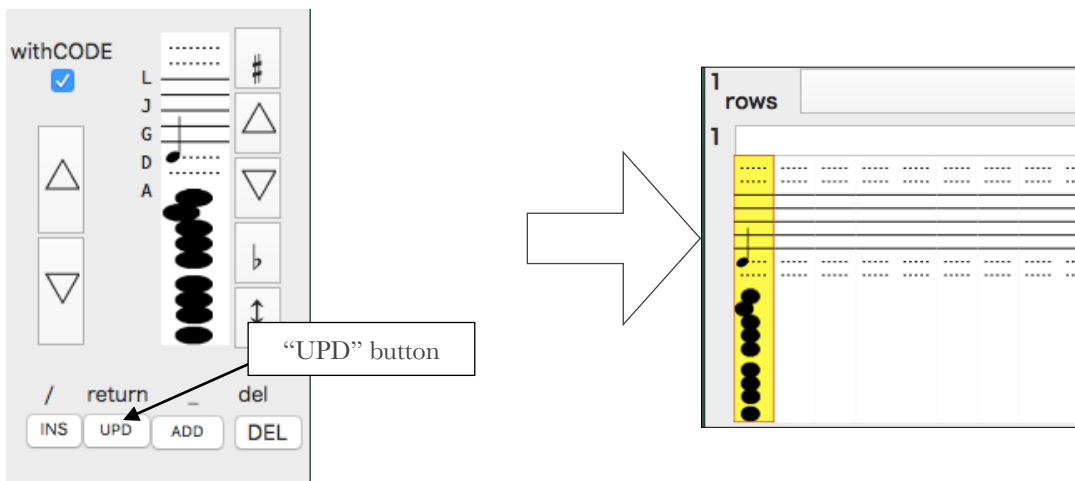
(1) Click the button of the crotchet , and the crotchet is shown on “notes section”



(2) Click "tone up/down" button few times to set the tone "C"

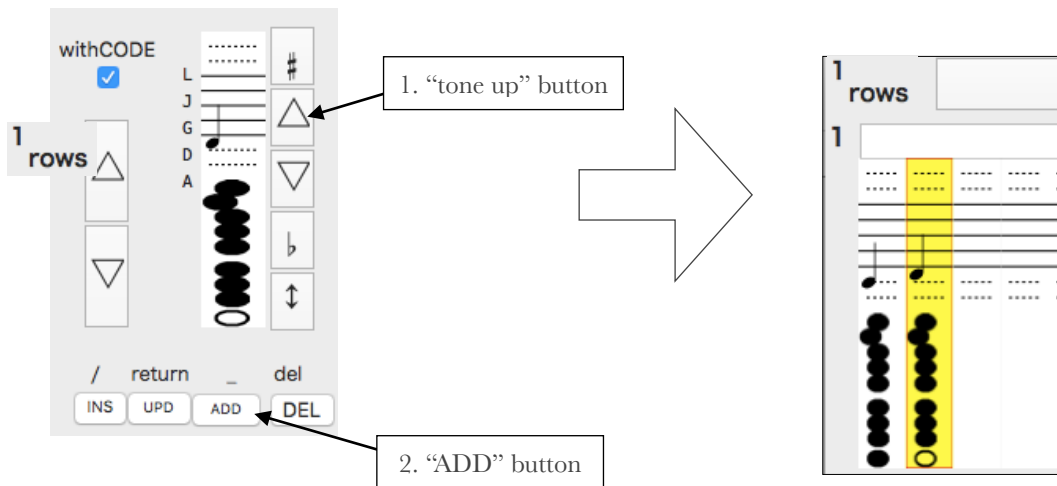


(3) Click "UPD" button to decide note , the crotchet will be shown on the "score view"



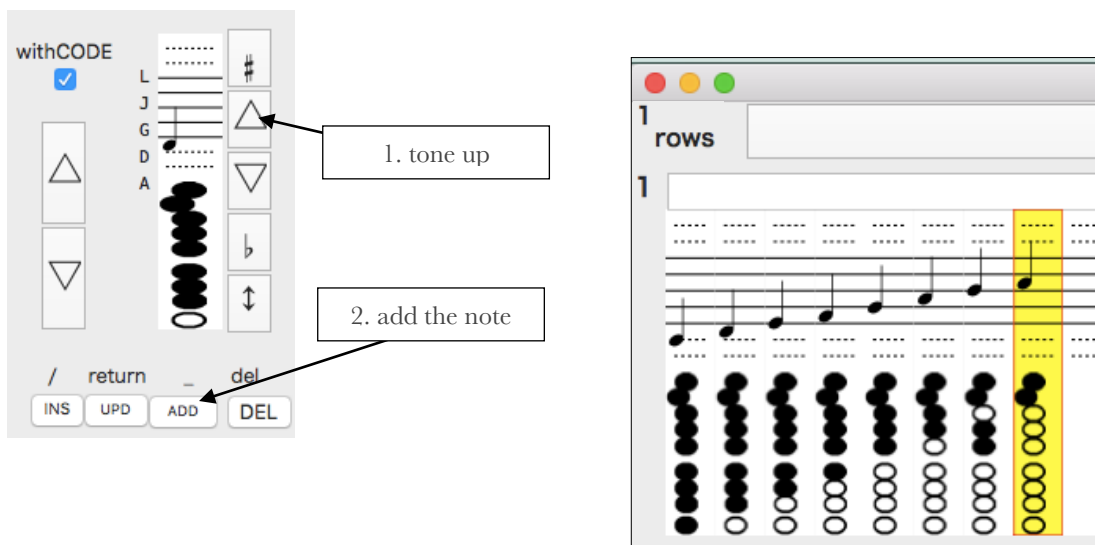
OK, you did enter one note . next , enter the note "D"

(4) Click “tone UP” button , and “ADD” button.



<Note> “ADD” button add the note back of selected note on score view .”INS” button insert the note in front of selected note , “UPD” button update the selected note.

(5) With same way, click “tone UP” button and “ADD” button ,you can enter “E” “F””B” on the score view.

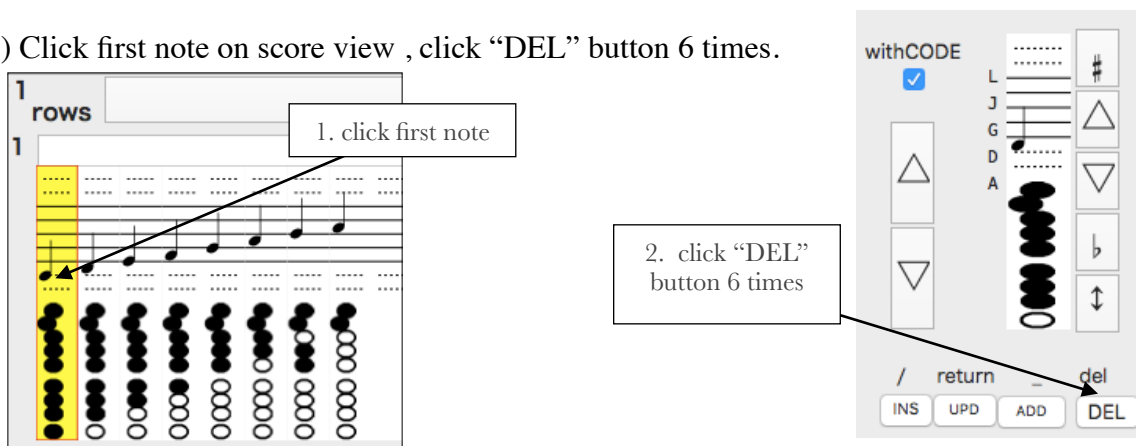


How was it ? you can enter the notes easier than you worried, can't you?

Next , try enter same score with keyboard.

As preparation , delete all notes you entered , return to initial state.

(6) Click first note on score view , click “DEL” button 6 times.



(7) You can't delete the last note, so update with blank.

select first note

1. blank button

2. "UPD" button

update with blank

Okay, let's try enter the notes with keyboard

1 - 2 enter the note with keyboard

(1) If you use Japanese keyboard, type "英数" key to change input mode English

"英数" key

(2) Type "3" key to select crotchet on "note section".

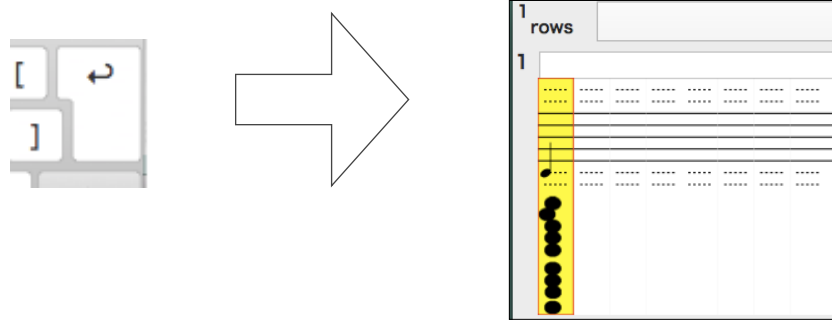
Type "UP" arrow key or "DOWN" arrow key to change the tone, set the tone to "C".

<Note> Arrow key with "SHIFT", you can up/down halftone.

"3" key

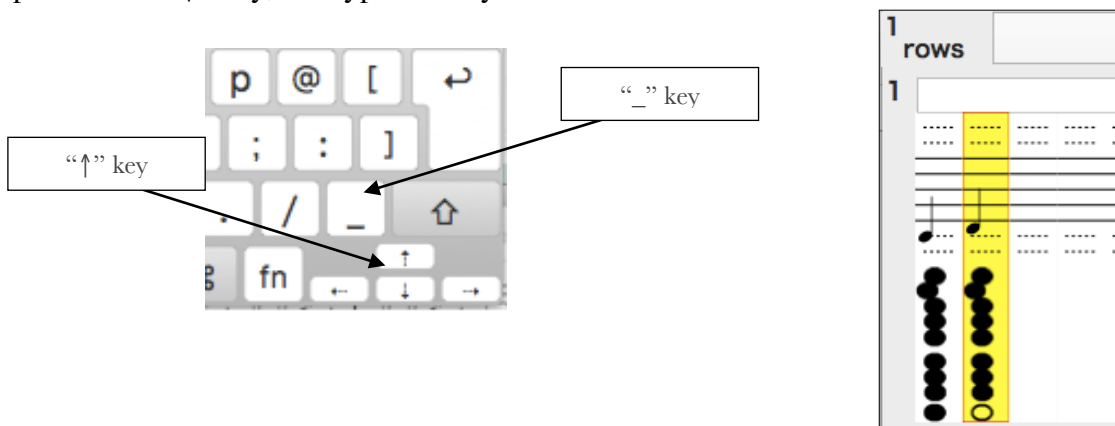
UP/DOWN arrow key

(3) Type return key to show the selected note on score view.



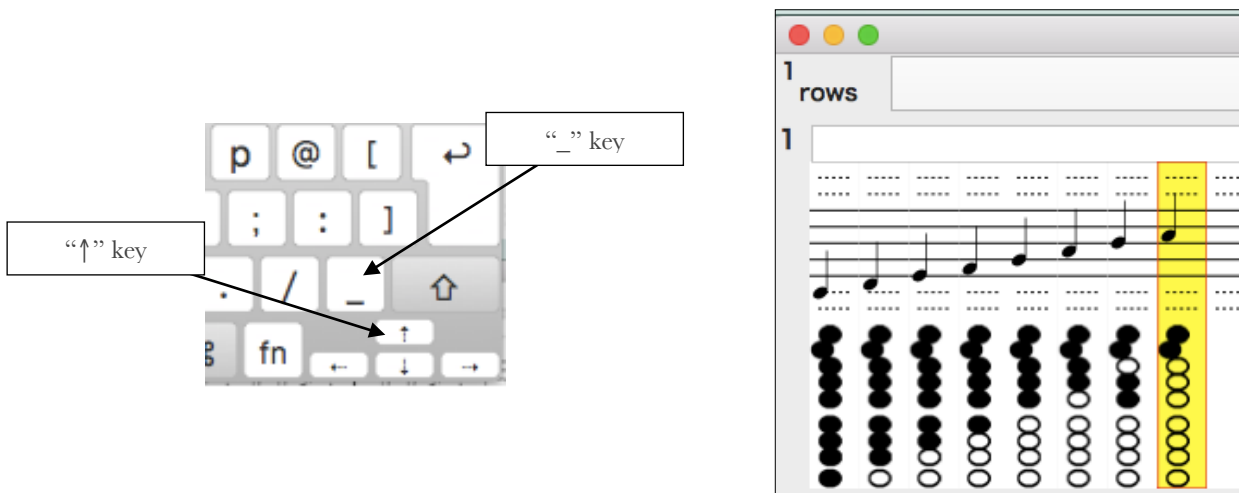
You did enter the “C” . next , enter the “D”.

(4) Up tone with “↑” key, and type “_” key .



<Note> “_” key add the note back of selected note on score view (same “ADD”button) . “/” key insert the notes in front of selected note (“INS”button), “enter” key update the selected note (“UPD”button).

(5) With same way, type “↑” key and “_” key ,you can enter “E” “F””B” on the score view.



Have you entered ?

Next , try enter same score with virtual piano.

As preparation , delete notes you entered .

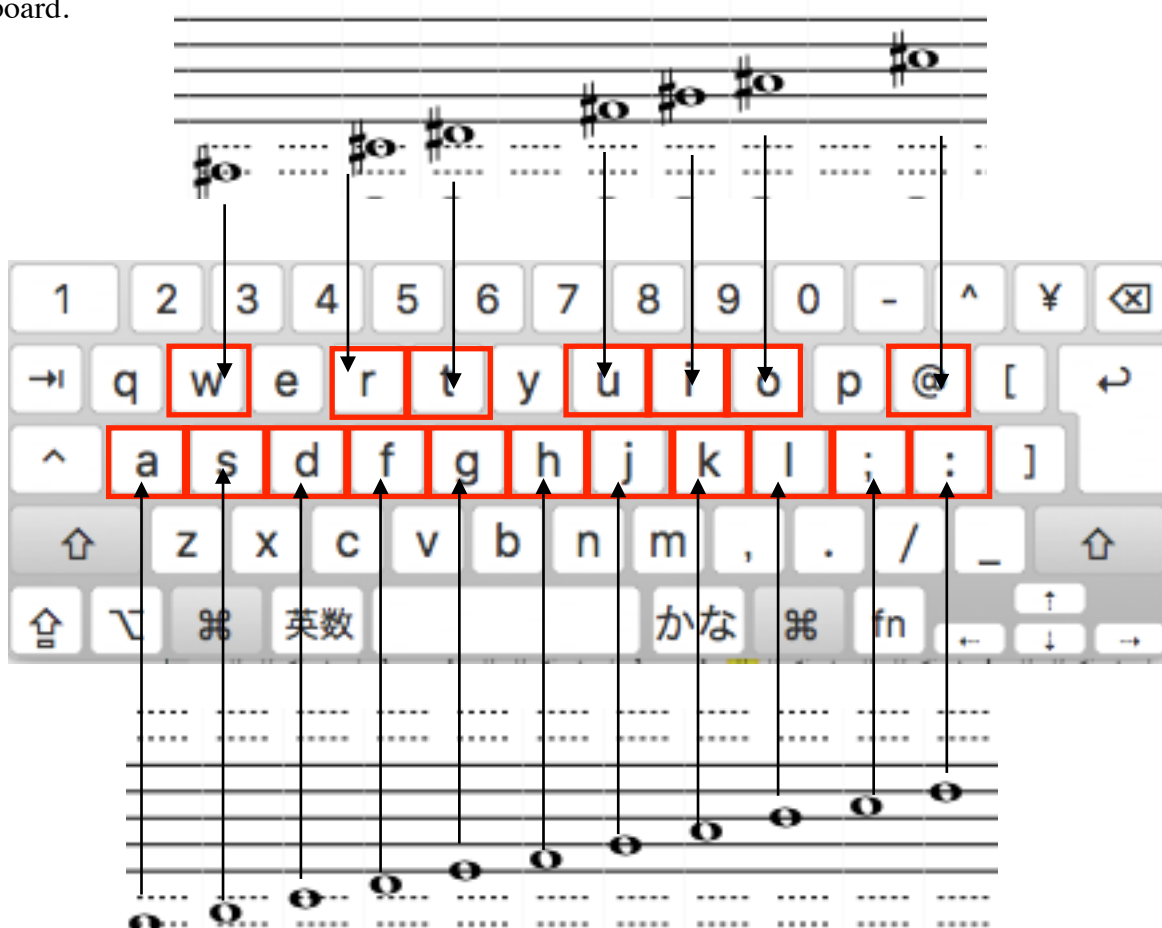
(6) Type “delete” key 6 times , delete the notes without the last one note

(7) Type “0” key and “return” key , to update the note with blank

So , enter the notes with virtual piano.

1 – 3 enter the notes with virtual piano.

While BambooScore is working , you can play with your keyboard of macintosh like a piano keyboard.



<Note> with “shift” key , you can play an octave upper .

(1) If you use Japanese keyboard , type “英数” key to change input mode English

(2) Type “3” key , to select crotchet.

(3) Type “D” key to set the tone “C”.

(4) Type “return” key to enter the selected note on “score view.”

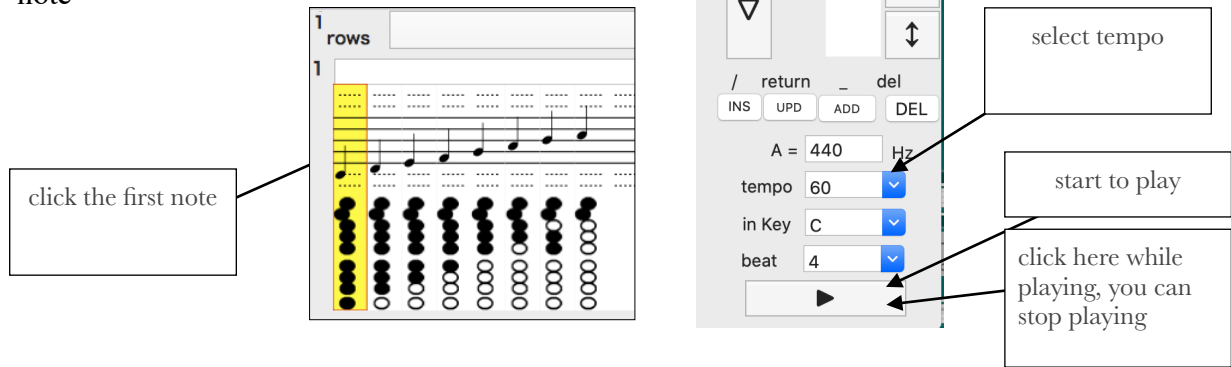
(5) Next , type “F” key and “_” key to add the note.

(6) With same way, type “G” ,”_”,”H”,”_””,”_” .

2 play the score

Could you enter the notes ? Up to now , you can enter notes and delete notes as you want to .
Now, let's sounds the score you did enter.

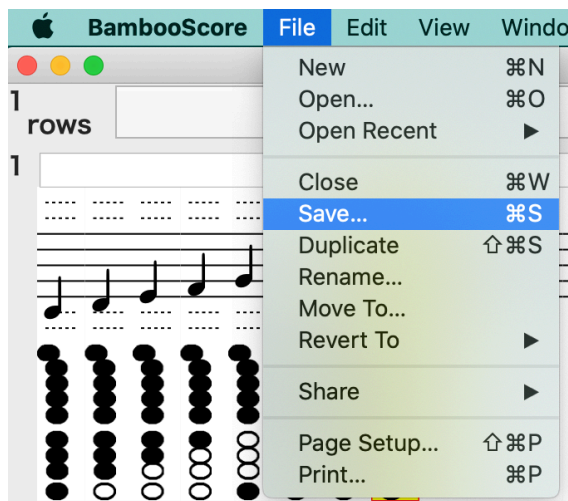
Select the first note on score view , and
click the play button
<Note> sound start to play at the selected
note



3 save / print the data

For precious your score , save the data .

To save the data , select “File” and “Save...” from menu bar , or , type “S” key with “⌘” key on keyboard.

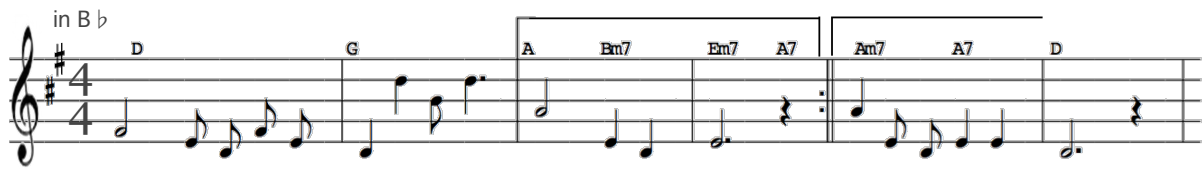


To open the file you saved , select “File” and “Open...” from menu bar , or , type “O” key with “⌘” key on keyboard.

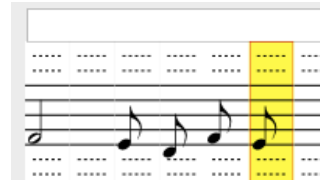
You can print out the sheet music also playing , select “File” and “print...” from menu bar , or , type “P” key with “⌘” key on keyboard.

4 enter the notes any more

Next , enter the notes any song.

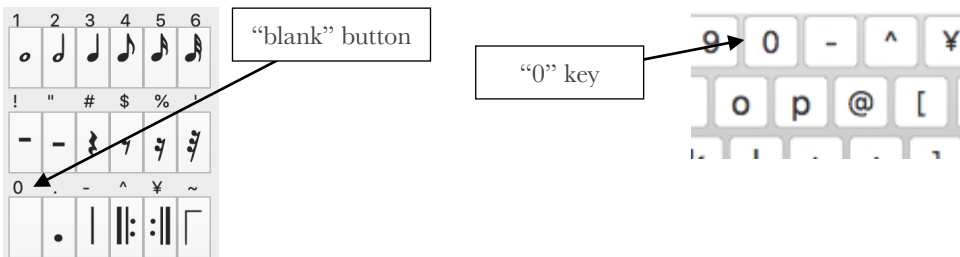


This is a first part of “Old Folks at Home(Swanee River)”
 I will give you more explanation of enter the notes .
 I guess you can enter the first bar.
 Select notes and enter it .

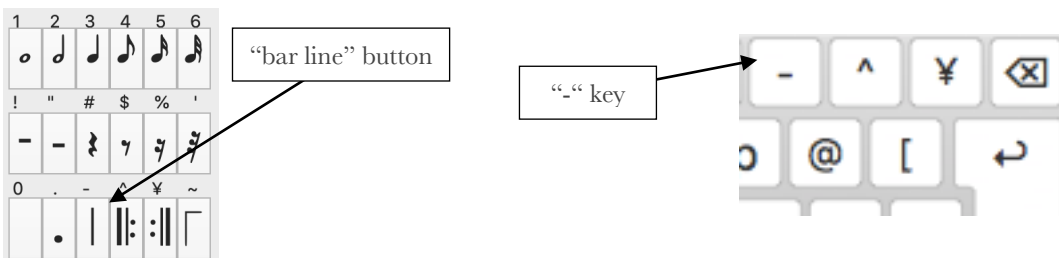


4 – 1 enter the various notes

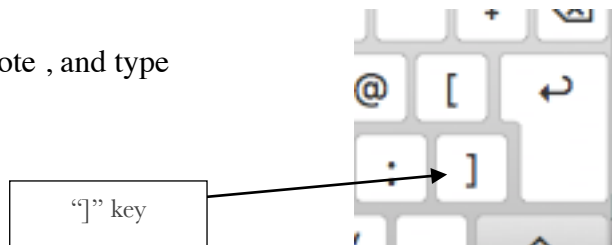
The blank , back from the minim , is placed for easy to read .
 To select the blank , same as enter the notes , click the “blank” button , or , type “0” key on the keyboard



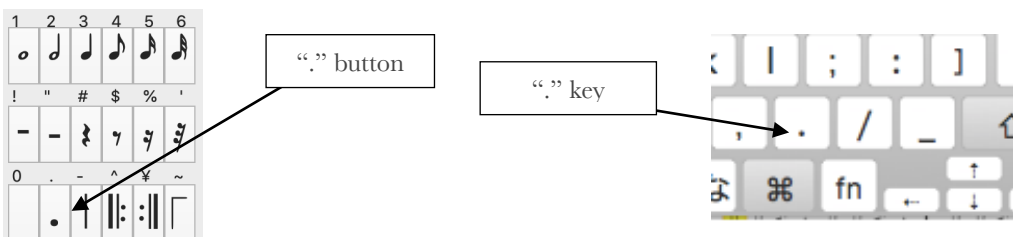
To select the bar line , click the “bar line” button , or , type “-” key on the keyboard



Let’s enter the 2nd bar.
 To upside-down the note, enter the normal note , and type “]” key



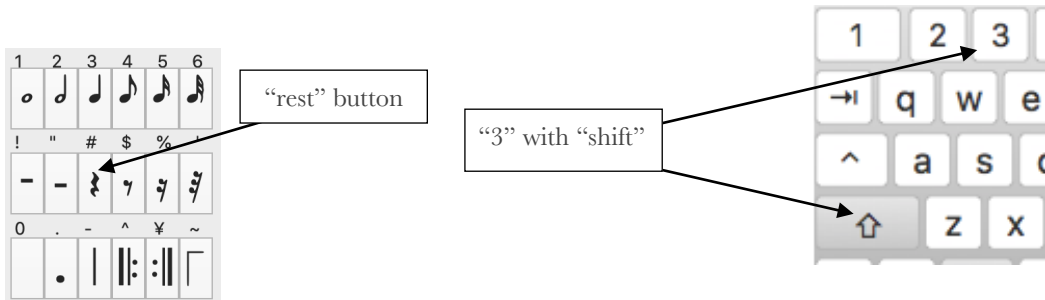
To add the dot on the note, click “.” button , or , type “.” key on the keyboard .



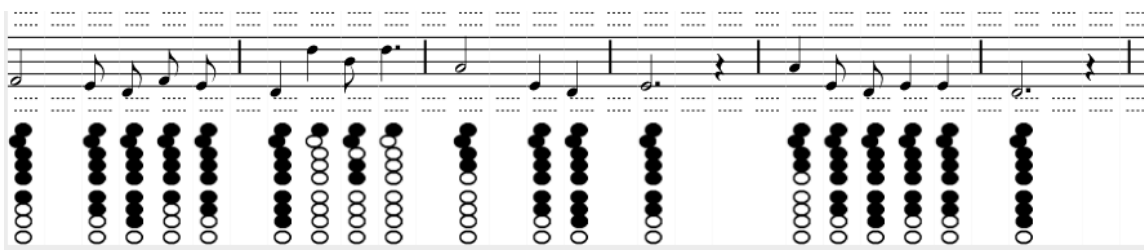
I guess you can enter the 3rd bar easily.

Next , 4th bar .

To enter the rest , same as note , click the “rest” button , or type “ 3” key with “shift”



Have you entered up to 6 bar ?



Now , select the first note and click “play” button .

4 – 2 repeat mark

How about do you feel ? It’s so far from your expectations , isn’t it ?

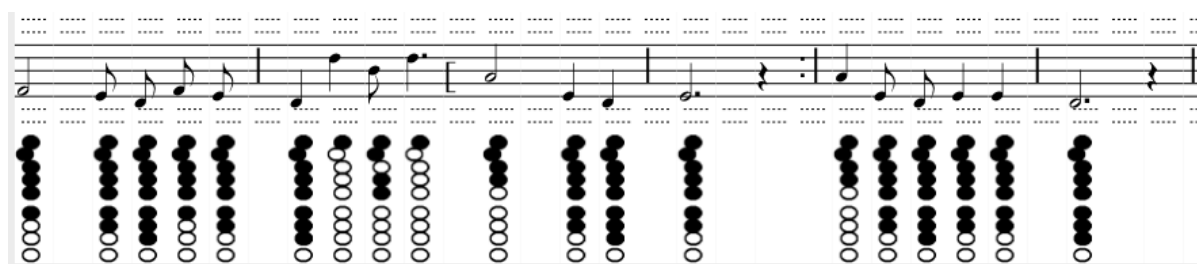
Because there are not placed repeat mark (||: :||) .

So , enter the repeat mark .

to enter the 1st ending mark (⌋),
click “[“ button ,
or , type “^” key with ”shit”

to enter the repeat mark (||: :||) , click
here , or , type “¥” key

If you entered the repeat mark , score view change like lower chart .



Let's play the score as test .

This time , the melody is far from correct melody .

Look the start of the original score , you find two “#” .

These two “#” change the melody .



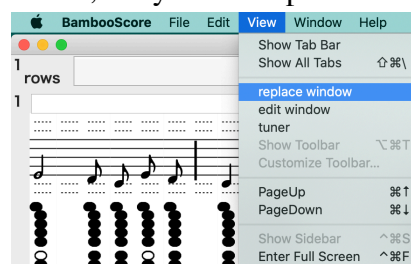
4 – 3 replace the tone

On “Bamboo Score” , you can't enter the “#” top of the score , but you can replace the tones.

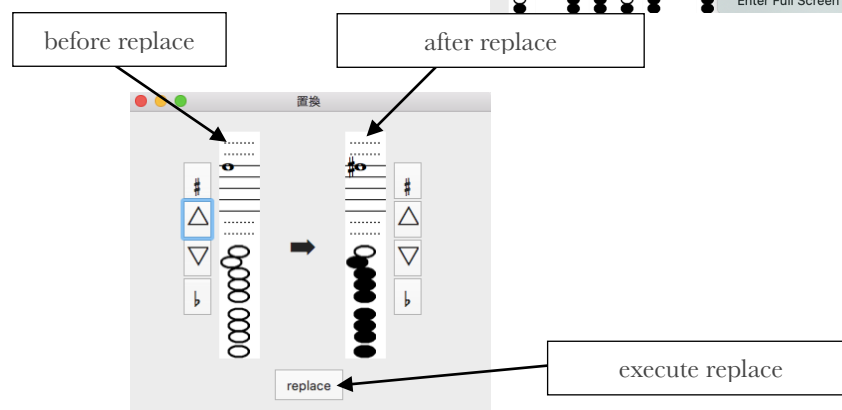
If you click “view” menu , you can see

the “replace” sub menu , that show

the “replace window” .



It will replace the left tone to the right tone .



“Old Folks at Home(Swanee River)” , “#” is placed on “C” and “F” , so you must replace twice .

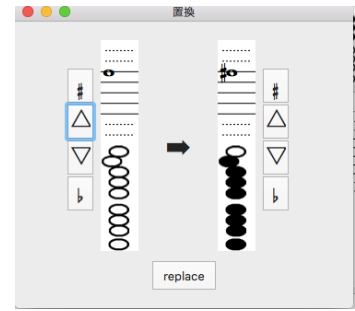
At first , push “△” button on left side some times , set the left tone to “F” .

Next , push “△” button on right side some times , set the left tone to “F” , and push “#” button (it means replace the tone “F” to “F#”) , and , push “replace button .



You can see all “F” on the score view replaced to “F#” .
 And this time , replace “C” to “C#” as same as “F”

Oops , sorry there are no “C” on this score , you can’t replace any tone .



4 – 4 enter the code name

Next , enter the code name.

If you use Japanese keyboard , type “英数” key to change input mode English

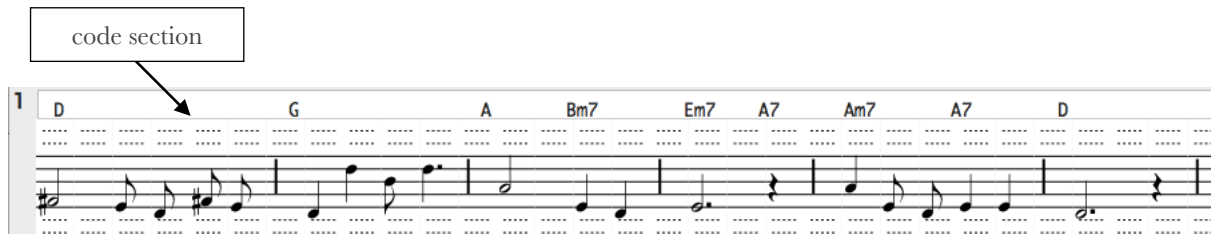
Click the code section , and enter the code name as you write a composition .

At this time , you must enter the blank between the codes .

You can enter the “#” like “C#m7” to type “3” with “shift” .

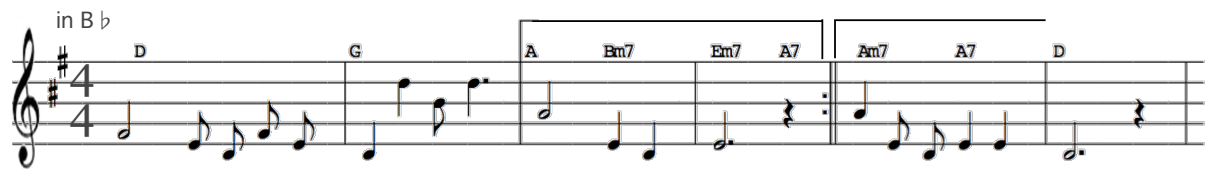
You can enter the “b” like “C b m7” to type “b” (a small letter of “B”) .

<Note> The contents on the code section , don’t influence any notes . So , you can input any letters (for example , words of music)



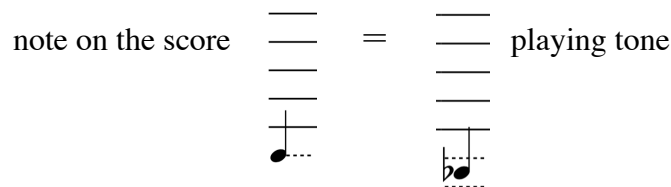
4 – 5 transpose the key of melody

Look at the original score again .



There are “in B b” at the top left of the score .

That says “C” on the score means tone “B b” when playing .

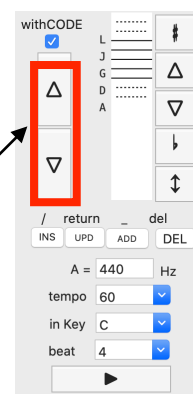


Therefore, let down one tone to coincide with playing tone .

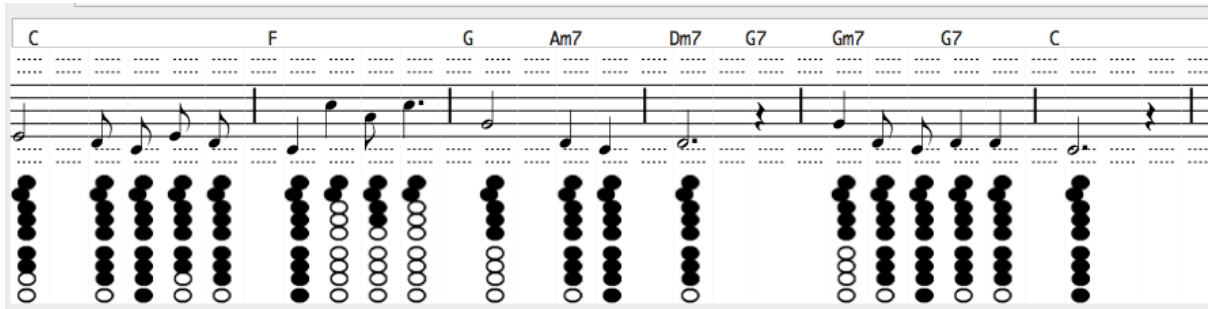
What way is to click “△” button or “▽” button on the left side of notes view . All of notes on score view are up or down .

Click twice “▽” button

up/down tone of all notes on score view



You can see the all notes and codes you just entered are changed .



It was a busy , that's all .

The first part of “Old Folks at Home(Swanee River)” is entered .

Type “S” with “⌘” to save all your efforts .

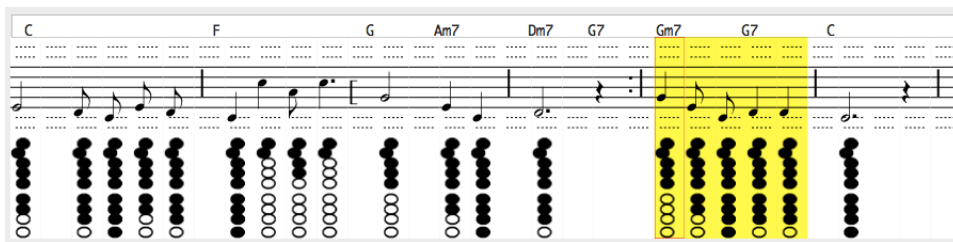
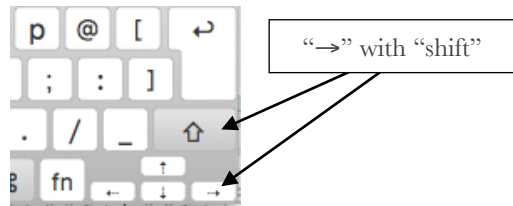
And play the sheet , printout the sheet .

And push any buttons you learned usage , up or down the tones , up side down the note , enter the code , that make you adjust “BambooScore”

One more things , I will make an explanation of the “copy and paste” .

4 – 6 copy and paste

Click the first note of you want to copy , and type right key(“→”) with “shift” key to widen the selected area .

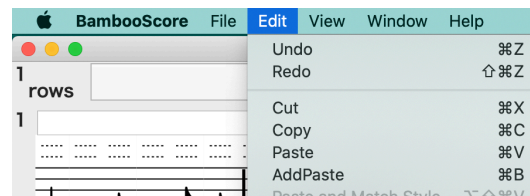


Select “Edit” menu and “Copy” submenu, or type “C” with “⌘” to copy .

Click where you will paste the note .

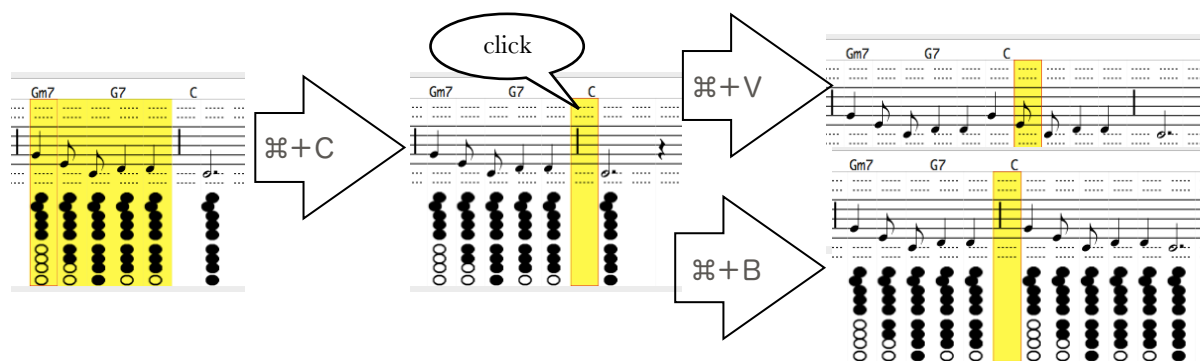
Select “Edit” menu and “Paste” submenu , or type “V” with “⌘” to paste the note .

Type “Z” with “⌘” to undo .



Do you find the “AddPaste” submenu into the “Edit” menu ?


Let's try it . Select any music notes and try “paste” and “addPaste” .

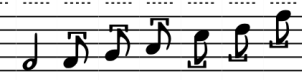






“Paste (⌘ + V) ” insert notes in front of selected position , “AddPaste (⌘ + B) ” add notes in rear of selected position .



4 – 7 Triplets , Tie notation

And now , enter the triplets and the tie notation .

I really wanted the triplets to look like this  when you enter the notes and printout , but unfortunately I couldn't achieve it.

So, instead, I made it look like this  on the enter note and this  on the printout.

you can enter the triplets with quarter notes and rests , eighth notes and rests , and sixteenth notes and rests .

And the tie notation is entered like this , printout like this 

Okey , enter the note .

This is a first part of “Night and Day”

score view 

printout 

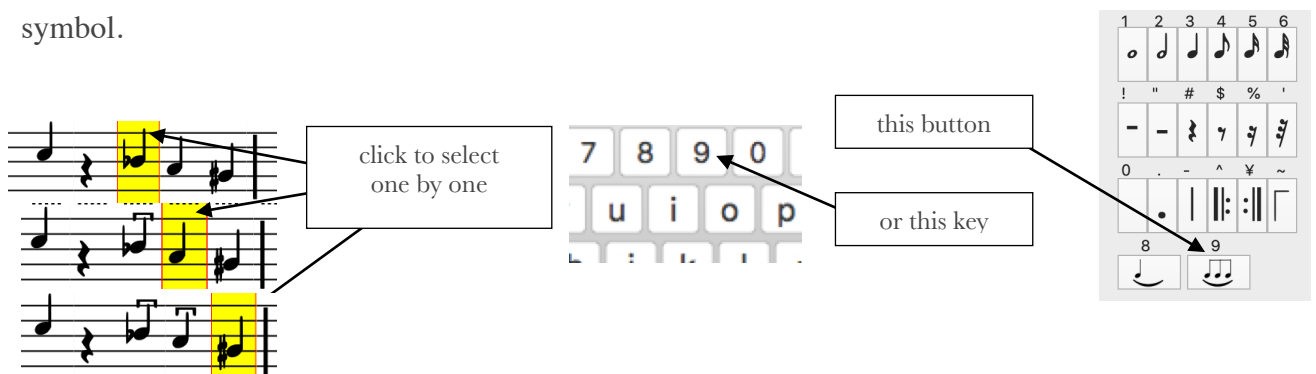
At first , Enter the notes as you already done.




Click on a whole note in the second measure to select it, then click on the tie notation button or press the "8" key on your keyboard to enter the tie notation.



Next, select the quarter notes you wish to make into triplets by clicking on them one by one, then click on the triplets button or press the '9' key on your keyboard to enter the triplets symbol.



Now , select the first note and click “play” button , and print it out .

Please note that if the three notes are not followed by a triplet, () it will not print correctly.

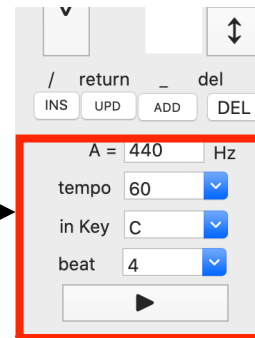
Click the button again or press the “8 / 9” key on your keyboard again to remove the respective notation.

5 more Play the note

In some cases, you play the sound and think:
"Oh, it's not quite right, it's a bit faster (higher pitched)".

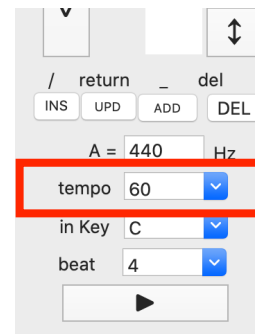
If so, set the number of

around here



5 - 1 set the tempo

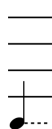
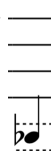
Change the play speed.

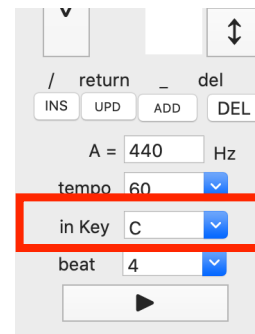


5 - 2 set the 'in Key'

We transpose all notes of song in 4 - 5 「transpose the key of melody」, but some one playing instrument B♭ or E♭ tube may hope to don't change the musicsheet and transpose the sound. (I play the B♭ tube Xaphoon, I hope that seriously)

If then, set "in Key" to B♭ / E♭.

If you select in Key = B♭,  make a sound of 



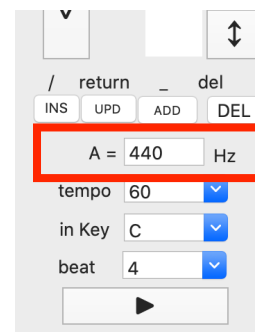
5 - 3 set the frequency

BambooSaxophone is handmade, so each one has a different tone.

You may say, "I've got one that's just a little low tone."

In that case, you can change the frequency of A to 436 or 432.

The pitch should be slightly different. (Normally, A=440Hz)

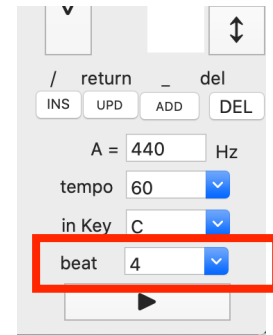


5 - 4 set the count of snappings

A counting note is played at the beginning of the melody.

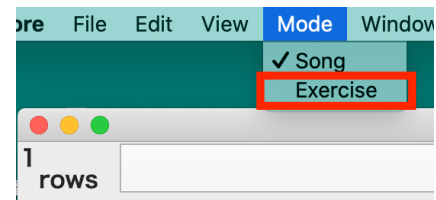
You can choose four or three times of counts.

Please change the beat setting.



5 - 5 exercise mode

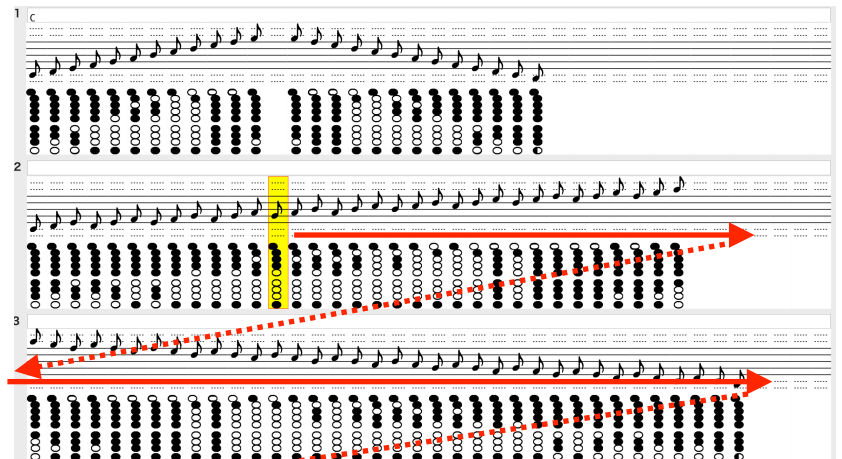
If you shall exercise some phrases , select the “Exercise mode”



In exercise mode, repeat the melody of a single selected line over and over.

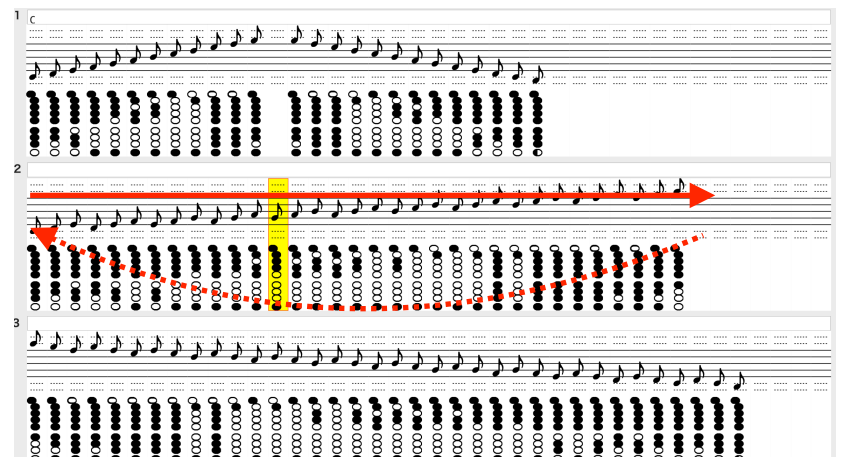
◎Song mode(Normally)

Start from the selected note and play to the end of the score.



◎Exerciseモード

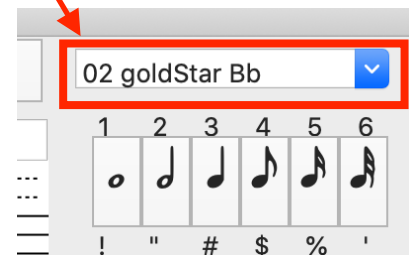
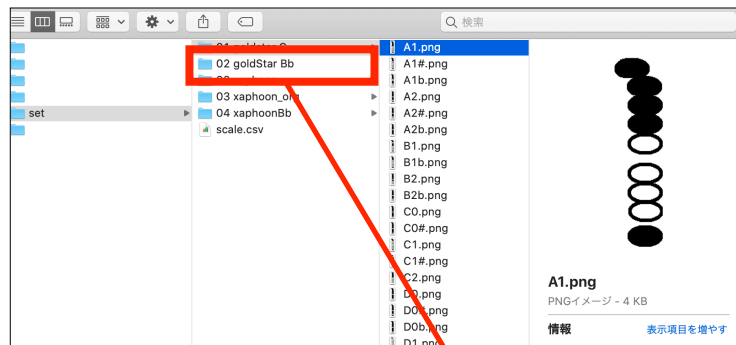
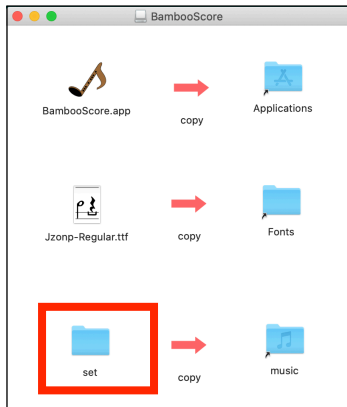
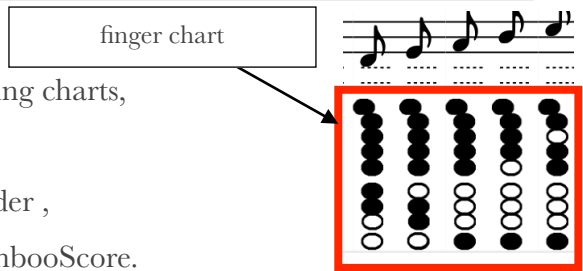
Start at the beginning of the selected line and repeatedly.



6 Additional tips

You can change the fingering chart in the score area to your own fingering chart, or additional fingering charts, except for the Xaphoon.

The fingering images can be found in the "set" folder , which you copied to "~/music" when you install BambooScore.



In the "set" folder, there are folders for each instrument. In each of these folders, you will find the fingering chart for each scale as a png files (C0.png, C0#.png....).

This png file can be rewritten with paint software, so if you have a fingering that you like, please rewrite it.

If you have created fingering files (C0.png, C0#.png....) for other instruments, you can create a new folder in the "set" folder and save the png files

The next time you launch BambooScore, the names of the folders in the "set" folder will appear in the “instrument” list .

By modifying or adding to the contents of the "set" folder, you can change the fingering to your liking or to that of another instrument.